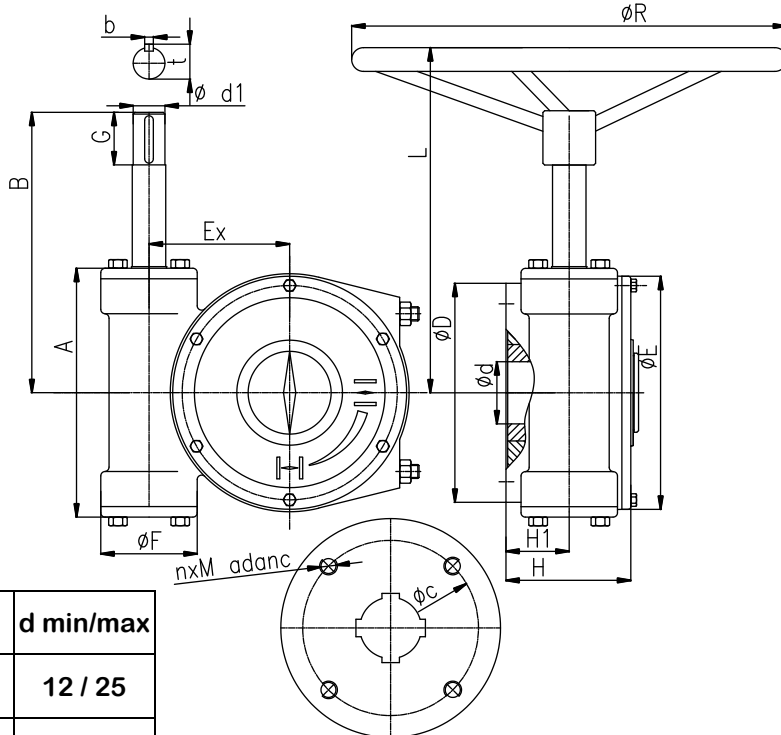


APLICATII

Reductoarele melc - roata melcata de tip RM sunt utilizate pentru actionarea robinetelor cu cursa de 90° (sfert de tura), respectiv robinete cu clapa future, robinete cu sfera, registre, etc.

Actionarea se face manual cu roata sau cu servomotor electric tip AUMA pentru RM200; RM400

DIMENSIUNI (mm)


Marime reductor	Flansa prindere	D	c	n x M adanc	Ex	d min/max
RM20	F07/F10	125	70/ 102	4xM8/15 4xM10x20	60	12 / 25
RM60	F10/F12	150	102/ 125	4xM10x20 4xM12/22	80	20 / 28
RM100	F12	150	125/	4xM12/22	100	30 / 40
RM200	F14/F16	210	140/1 65	4xM16/25 4xM20/30	125	32 / 45
RM400	F16	250	165/ (210)	4xM20/30	160	40 / 60

Marime reductor	A	B	G	E	F	H	H1	L	d1	b	t	R	Masa ~Kg
RM20	155	150	25	120	60	78	38	210	20	6	22.5	300	10
RM60	165	160	38	160	85	91	44	220	20	6	22.5	400	15
RM100	190	175	38	200	88	105	52	240	24	8	27.5	400	17
RM200	235	220	42	245	100	135	65	280	28	8	31.5	500	30
RM400	280	320	58	265	110	152	72	380	36	12	40.5	500	47

CARACTERISTICI CONSTRUCTIVE SI FUNCTIONALE

Marime reductor	RM20	RM60	RM100	RM200	RM400
Moment maxim la iesire* (Nm)	200	600	1000	2000	4000
Moment maxim la intrare* (Nm)	50	150	200	200	250
Nr rotatii pe cursa de 90° (rot)	8	13	13.5	13	13.5
Cursa unghiulara	90° ± 5°	90° ± 5°	90° ± 5°	90° ± 5°	90° ± 5°

*- momente maxime conditionate de rezistenta mecanica a componentelor.

MATERIALE

- Carcasa, Capac: **Fonta cenusie EN GJL 250 EN1561**
- Sector melcat : **Fonta nodulara EN GJS 500 7 EN1563**
- Ax melcat: **C45 (OLC45)imbunatatit**
- Vopsire: **email epoxidic bicomponent tip E310 (executie standard).**
La cerere: se pot aplica si alte sisteme de vopsire.